

## Press Release

Innovative FAULHABER drive system for smart logistics

### **DualGear System Enables Two Synchronous Movements with Maximum Performance**

**With its new DualGear, FAULHABER presents a high-performance drive system which combines tried-and-tested BX4 and GPT technology in a single, well thought-out unit. Developed for the demands of modern conveying systems, the DualGear provides high dynamics, robustness and precision in a compact, diameter-compliant design.**

The DualGear drive system has been specifically designed for applications in conveyor belts as well as in compact wheel drives of autonomous logistics systems. Especially in intralogistics environments where space is limited, the system offers a high-performance and economical solution. A particular advantage is its versatility: Two synchronous movements can be realized with one drive. This reduces integration effort significantly, while at the same time optimizing installation space and system costs.

#### **Powerful Combination of BX4 and GPT Technology**

The new drive system combines two high-performance partners in a compact unit: the powerful and dynamic brushless 32 mm motor from the tried-and-tested BX4 family and two diameter-compliant mounted, robust metal planetary gearheads from the GPT series at both ends of the motor.

The BX4 base motor for the DualGear combination is available in two motor lengths with 42 mm and 68 mm. This allows the drive system to be flexibly adapted to different performance and installation space requirements. Hall sensors with sine/cosine output signals enable precise detection of the rotor position for exact commutation and positioning. In combination with an external motion controller, accurate positioning movement is possible, resulting in a drive system that combines torque and maximum accuracy with a compact design.

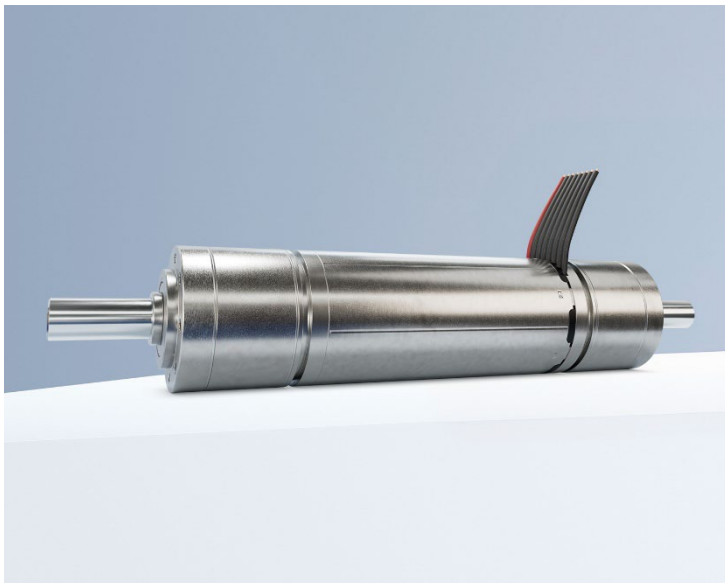
In this combination, the GPT planetary gearheads are available with up to three stages, which enables exact dimensioning with respect to speed and torque requirements.

The components have only welded joints to ensure reliable and durable construction without the use of adhesives.

## Upgrade for Conveying and Intralogistics Systems

Modern conveying and logistics systems require dynamic, durable and integratable drive solutions. The DualGear meets these requirements thanks to its robust design, high control accuracy and long service life. The possibility of realizing two synchronous, powerful movements with just one drive and a central control, creates new approaches for efficient, simple system architectures in the next generation of conveying and intralogistics systems.

[372 words / 2,587 characters]



Innovative FAULHABER drive system for smart logistics© FAULHABER

---

### Press contact (Germany + International)

Dr. Fritz Faulhaber GmbH & Co. KG  
Kristina Wolff – Marketing  
Faulhaberstraße 1 · 71101 Schönaich  
Germany

T +49 7031 638-148 · F +49 7031 638-8148  
[redaktion@faulhaber.com](mailto:redaktion@faulhaber.com)

### Press contact (Switzerland + Italy)

FAULHABER SA  
Ann-Kristin Hage-Ripamonti – Marketing  
6980 Croglio  
Switzerland

T +41 91 61 13 239 · F +41 91 611 31 10  
[marketing@faulhaber.ch](mailto:marketing@faulhaber.ch)