

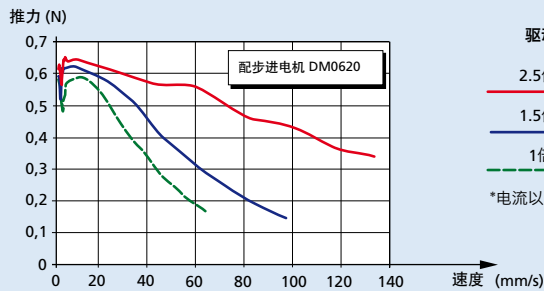
丝杠

直线定位 PRECistep® 专利技术

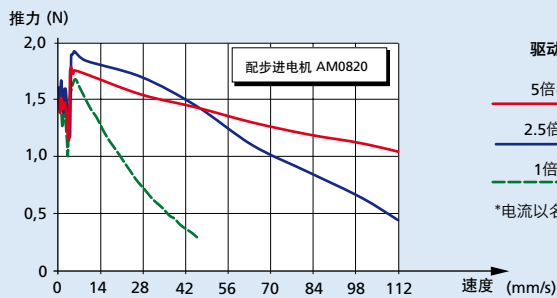
适配部件
步进电机: DM0620, AM0820, AM1020

M1.6 x 0.35 x L1 系列

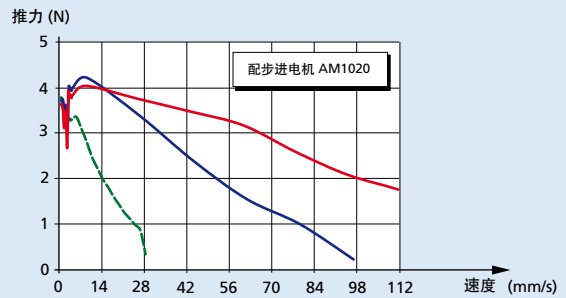
标称外径	1,6	mm
螺距	0,35	mm
材质	不锈钢	



驱动参数设置
 2.5倍名义电压*
 1.5倍名义电压*
 1倍名义电压
 *电流以名义电流值为限



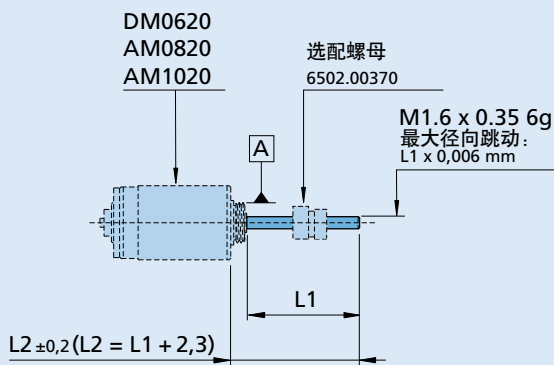
驱动参数设置
 5倍名义电压*
 2.5倍名义电压*
 1倍名义电压
 *电流以名义电流值为限



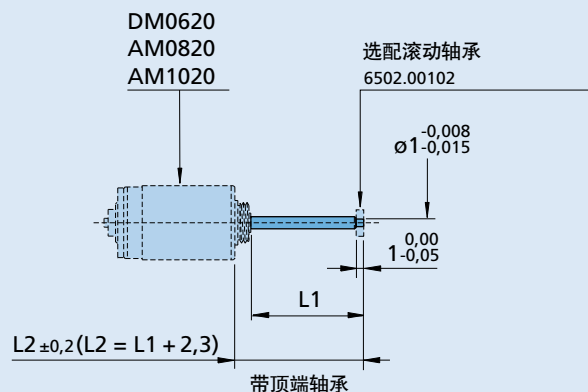
重要说明: 推力曲线已考虑了对应电机的安全余量。为更好理解曲线含义, 请阅读“技术信息”章节。

订货代码	L1 (mm) =	7.5	15	25	定制
名称 (无顶端轴承)		M1.6x7.5	M1.6x15	-	M1.6xL1*
名称 (带顶端轴承)		-	M1.6x15T	M1.6x25T	M1.6xL1T*

* 若需订制长度, 请联系当地销售代表。



M1,6 x 0,35 x L1




M1,6 x 0,35 x L1 T

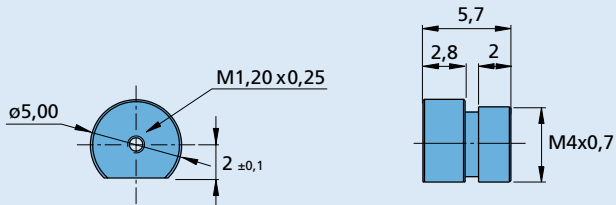
丝杠

螺母与轴承选配件
PREClstep® 专利技术

选配件


适配 M1.2 x 0.25 丝杠

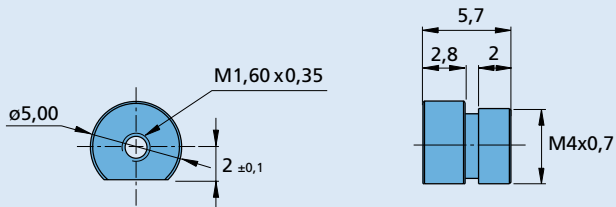
比例: 2:1 



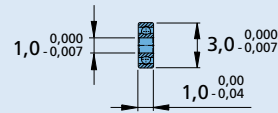
螺母订货代码: 6502.00366, 自润滑合成材质

适配 M1.6 x 0.35 丝杠

比例: 2:1 




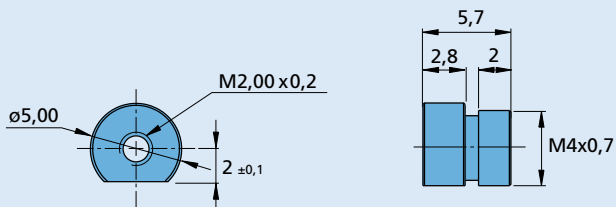
螺母订货代码: 6502.00370, 自润滑合成材质



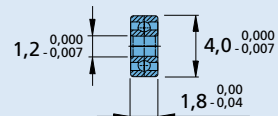
丝杠顶端轴承订货代码: 6502.00102

适配 M2.0 x 0.2 丝杠

比例: 2:1 




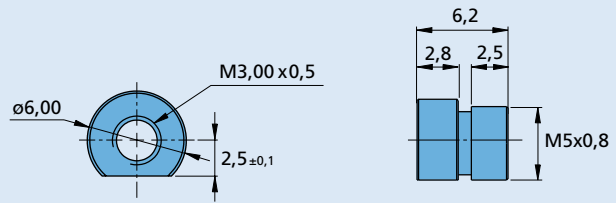
螺母订货代码: 6502.00337, 自润滑合成材质



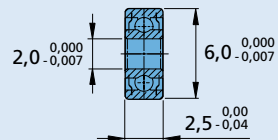
丝杠顶端轴承订货代码: 6502.00097

适配 M3.0 x 0.5 丝杠

比例: 2:1 



螺母订货代码: 6502.00323, 自润滑合成材质



丝杠顶端轴承订货代码: 6502.00103