

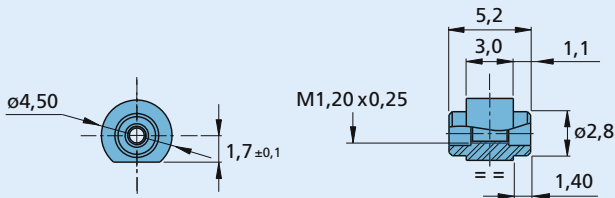
Lead Screw

Optional nuts and bearings
PRECiStep® Technology

Options

For M1,2 x 0,25 Lead screws

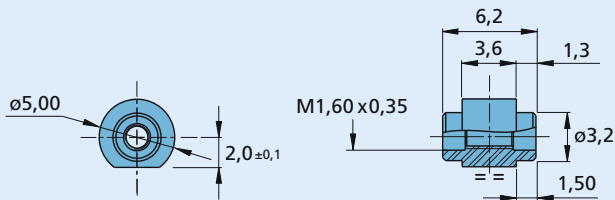
Scale 2:1



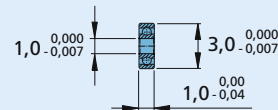
Nut Part No. 2.8000.08.351

For M1,6 x 0,35 Lead screws

Scale 2:1



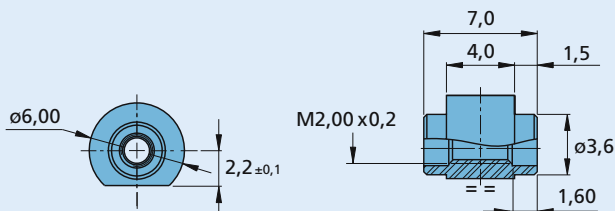
Nut Part No. 2.8000.90.510



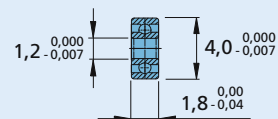
Bearing for lead screw tip Part No. 2.8000.08.401

For M2,0 x 0,2 Lead screws

Scale 2:1



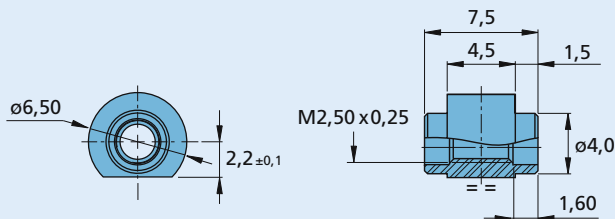
Nut Part No. 2.8000.08.353



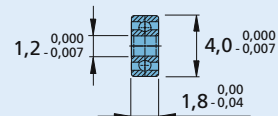
Bearing for lead screw tip Part No. 2.8000.10.401

For M2,5 x 0,25 Lead screws

Scale 2:1



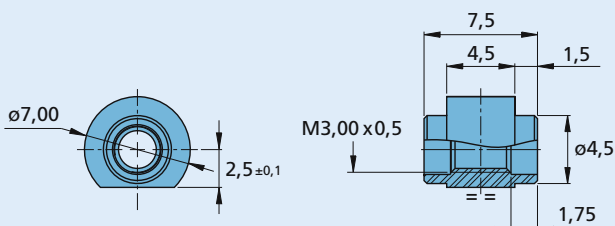
Nut Part No. 2.8000.90.511



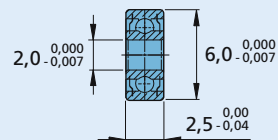
Bearing for lead screw tip Part No. 2.8000.10.401

For M3,0 x 0,5 Lead screws

Scale 2:1



Nut Part No. 2.8000.15.340



Bearing for lead screw tip Part No. 2.8000.22.450